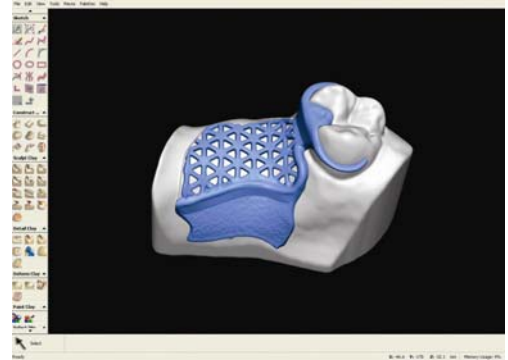


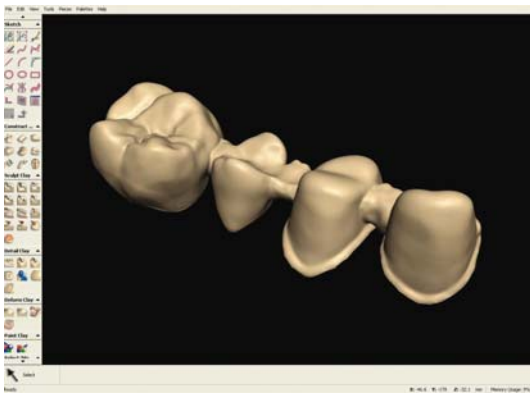


FreeForm® Modeling™ — Fast 3D Dental Modeling

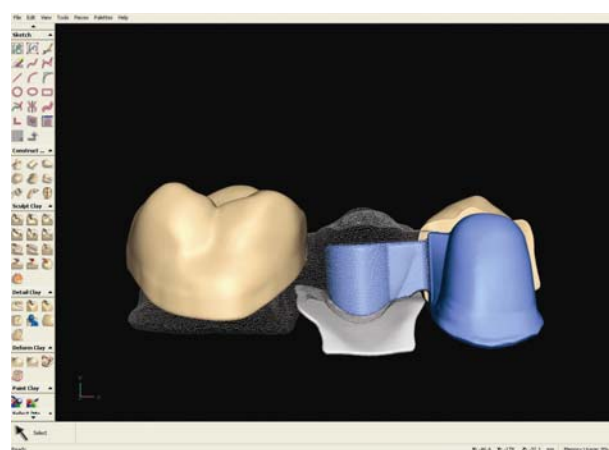
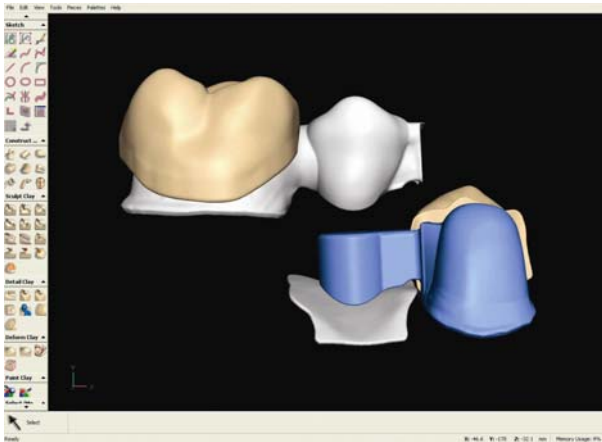
The **FreeForm Modeling** system offers a fast and cost effective way to create original 3D models or use with STL data from scanners or existing dental software. The system includes a comprehensive set of modeling and detailing tools, dimensional control, and import of polygon data for reference and modeling. Export for Rapid Prototyping, STL milling, or rendering.



Combine imported copings with modeled, anatomical teeth and bridges. Use with STL data from scanners or existing dental software.

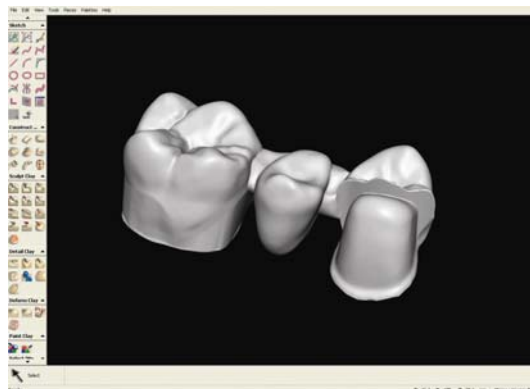
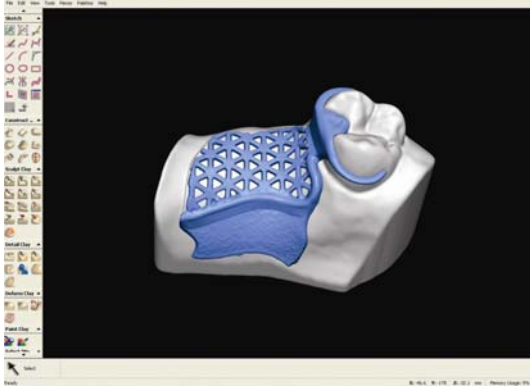


Model two-part bridges with attachments to easily accommodate copings at different angles.

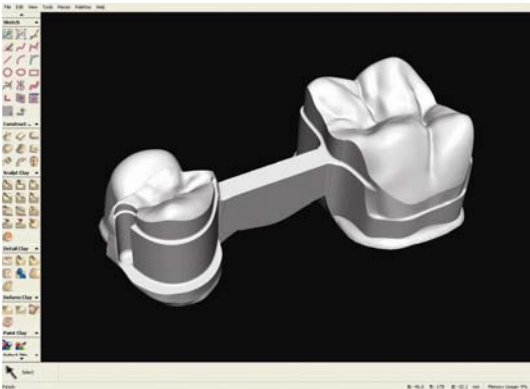


— More —

Rapidly develop digital wax-ups. Create the best fit and construction to deliver optimal solutions.



Create telescopic crowns with milled bars and interlocks.



Touch-enabled 3D Modeling with Virtual Wax

The FreeForm Modeling system includes a PHANTOM® device—a true 3D interface with force feedback that enables you to use your sense of touch to create virtual wax models. This natural and direct way of working makes the FreeForm system easy to learn, and users typically become productive within a few days. The FreeForm Modeling system is available with either the PHANTOM® Omni™ or PHANTOM® Desktop™ device.



PHANTOM Omni



PHANTOM Desktop



www.sensable.com

Corporate Headquarters

SensAble Technologies, Inc.
15 Constitution Way
Woburn, MA 01801 USA
[t] +1-781-937-8315
[f] +1-781-937-8325
email: info@sensable.com

© 2006 SensAble Technologies, Inc. All rights reserved. FreeForm, FreeForm Modeling, PHANTOM, PHANTOM Desktop, PHANTOM Omni, SensAble, and SensAble Technologies, Inc. are trademarks or registered trademarks of SensAble Technologies, Inc. Other brand and product names are trademarks of their respective holders.